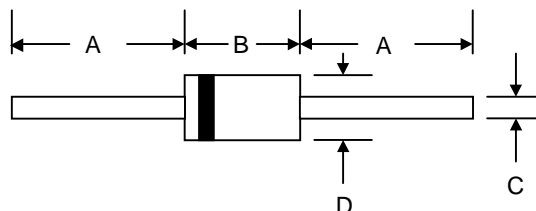


Switchmode Schottky Barrier Power Rectifiers

Using the Schottky Barrier principle with high temperature operation metal. The proprietary barrier technology allows for reliable operation up to 150°C junction temperature. Typical application are in switching Mode power Supplies such as adaptators, Photovoltaic Solar cell protection, free-wheeling and polarity protection diodes.



Features

- * Ultra Low Forward Voltage.
- * Low Switching noise.
- * High Current Capacity
- * Low Power Loss & High efficiency.
- * 150°C Operating Junction Temperature
- * Low Stored Charge Majority Carrier Conduction.
- * Plastic Material used Carries Underwriters Laboratory Flammability Classification 94V-O



DO-201AD		
Dim	Min	Max
A	25.4	—
B	7.20	9.50
C	1.20	1.30
D	4.80	5.30
All Dimensions in mm		

MAXIMUM RATINGS

Characteristic	Symbol	SR304L	Unit
Peak Repetitive Reverse Voltage	V_{RRM}	40	V
Working Peak Reverse Voltage	V_{RWM}		
DC Blocking Voltage	V_R		
RMS Reverse Voltage	$V_{R(RMS)}$	28	V
Average Rectifier Forward Current	$I_{F(AV)}$	3	A
Peak Repetitive Forward Current (Rate V_R , Square Wave, 20kHz)	I_{FM}	6	A
Non-Repetitive Peak Surge Current (Surge applied at rate load conditions halfwave, single phase, 60Hz)	I_{FSM}	125	A
Operating and Storage Junction Temperature Range	T_J, T_{stg}	-65 to +150	°C

THERMAL RESISTANCES

Typical Thermal Resistance junction to body	$R_{\theta j-c}$	55	°C/w
---	------------------	----	------

ELECTRICAL CHARACTERISTICS

Characteristic	Symbol	SR304L			Unit
Maximum Instantaneous Forward Voltage ($I_F = 0.1$ Amp $T_C = 25^\circ\text{C}$) ($I_F = 1.5$ Amp $T_C = 25^\circ\text{C}$) ($I_F = 3.0$ Amp $T_C = 25^\circ\text{C}$)	V_F	Min	Typ.	Max.	V
		---	0.28	0.30	
		---	0.37	0.39	
		---	0.41	0.49	
Maximum Instantaneous Reverse Current (Rated DC Voltage, $T_C = 25^\circ\text{C}$) (Rated DC Voltage, $T_C = 100^\circ\text{C}$)	I_R	0.2 30			mA

FIG-1 FORWARD CURRENT DERATING CURVE

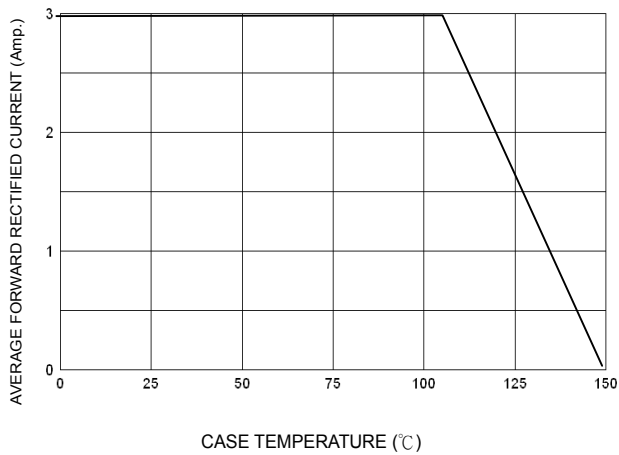


FIG-2 TYPICAL FORWARD CHARACTERISTICS

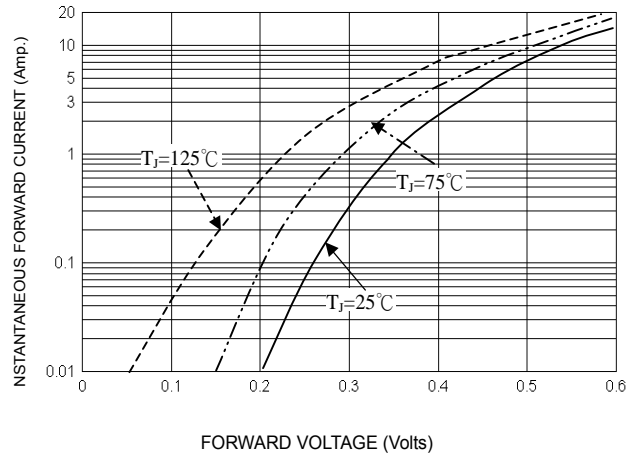


FIG-3 TYPICAL REVERSE CHARACTERISTICS

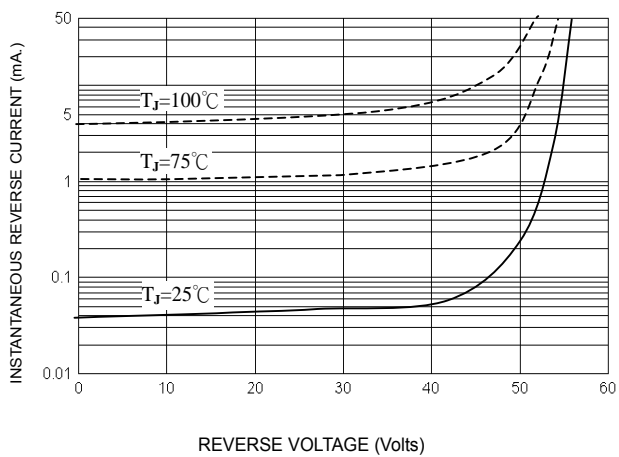


FIG-4 TYPICAL JUNCTION CAPACITANCE

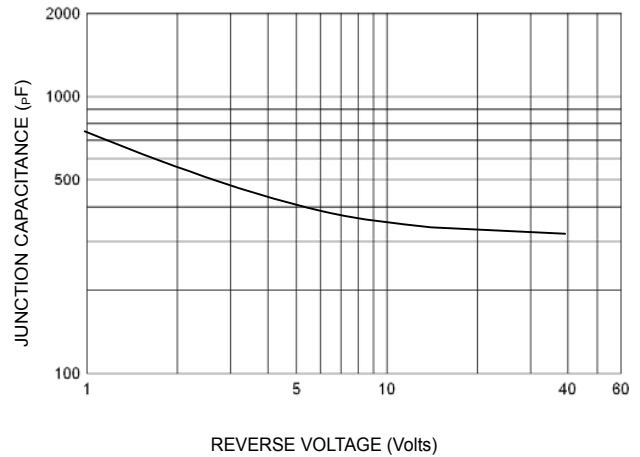


FIG-5 PEAK FORWARD SURGE CURRENT

