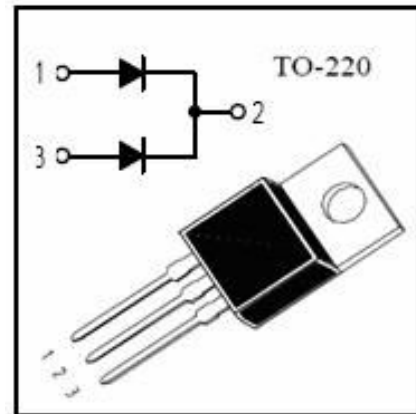


APPLICATIONS

- Switch power supply
- General circuits

FEATURES

- Common cathode structure
- Lowpowerloss,high efficiency
- HighOperating Junction Temperature. High reliability
- ROHS product



ABSOLUTE RATINGS(Tc=25°C)

Parameter		SYMBOL	Value	UNIT
Repetitive peak reverse voltage		V_{RRM}	200	V
Average forward current	per device	$I_{F(AV)}$	16	A
	per diode		8	
Surge non repetitive forward current		I_{FSM}	80	A
Maximum junction temperature		T_J	150	°C
Storage temperature range		T_{STG}	-50~+150	°C

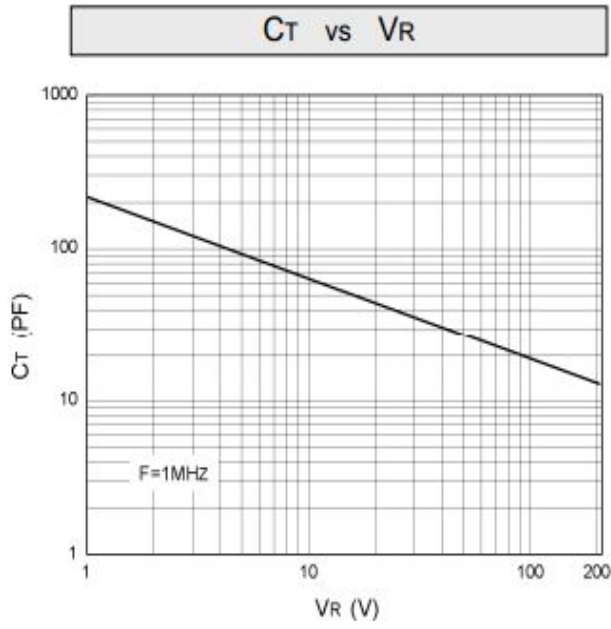
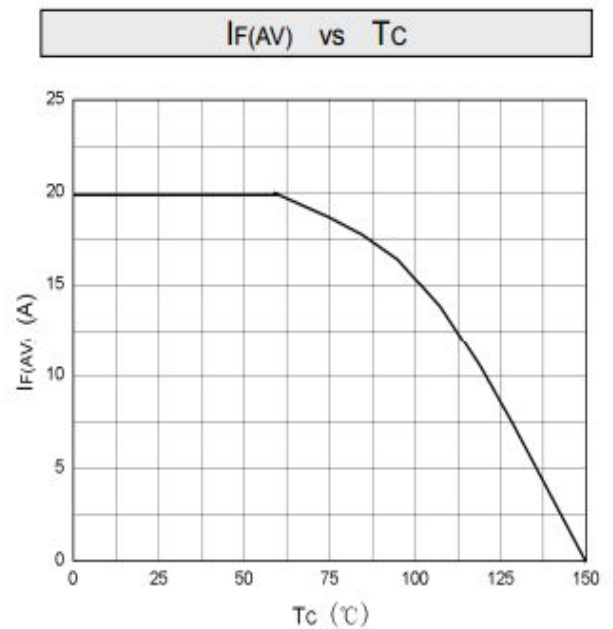
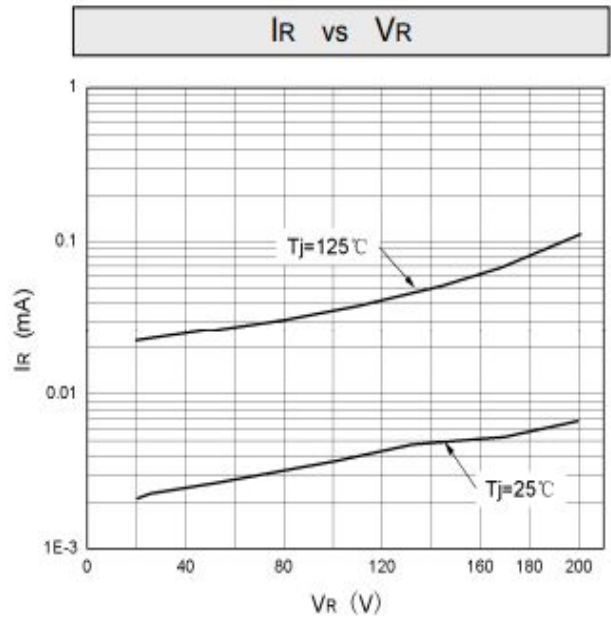
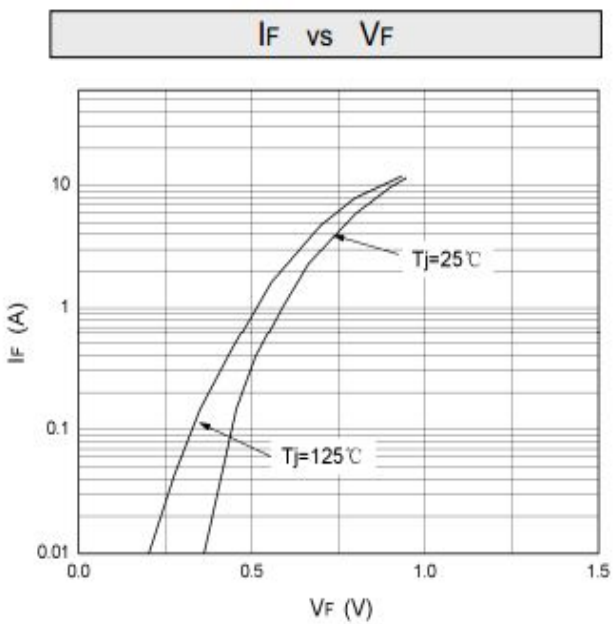
Electronic Characteristics(Tc=25°C)

Parameter	Tests conditions		Value(min)	Value(typ)	Value(max)	UNIT
VRRM	$I_R=10\mu A$		200			V
IR	$T_J=25^\circ C$	$V_R=V_{RRM}$			50	μA
	$T_J=125^\circ C$				200	μA
VF	$T_J=25^\circ C$	$I_F=8A$		0.93	1.1	V
	$T_J=125^\circ C$				1	V
Reverse Recovery Time ($I_F=0.5A, I_R=1.0, I_{rr}=0.25A$)	T_{rr}			150		ns

THERMAL CHARACTERISTICS

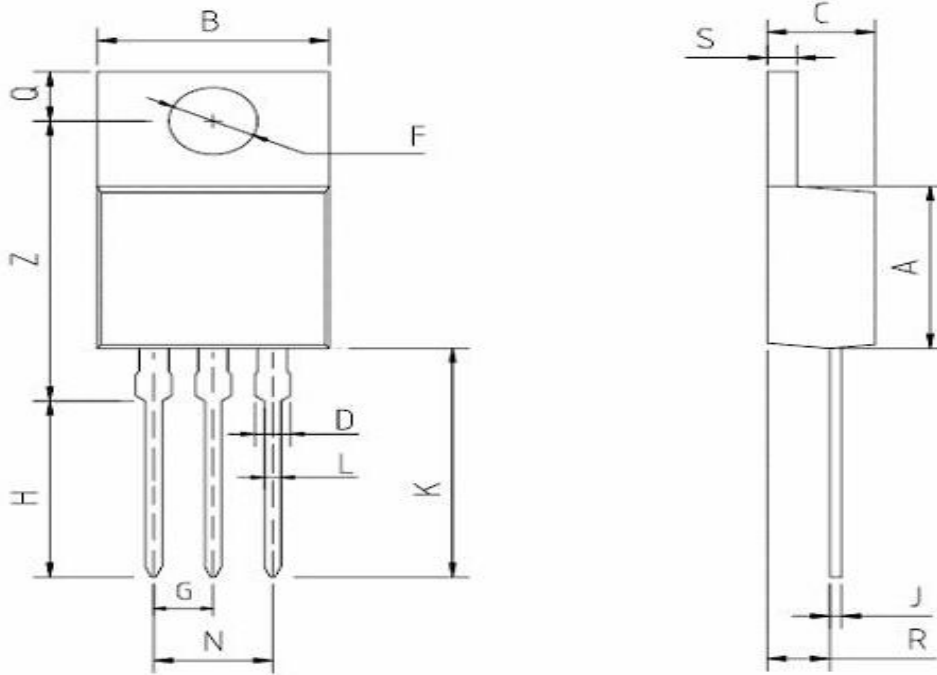
Parameter	Symbol	Value(min)	Value(max)	Unit
Thermal resistance from junction to case	Rth(j-c)		1.9	°C/W

ELECTRICAL CHARACTERISTICS(curves)



TO-220 MECHANICAL DATA

UNIT: mm



SYMBOL	Min	Nom	Max
A	9.00	9.20	9.40
B	9.50	10.00	10.50
C	4.20	4.50	4.80
D	1.20	1.25	1.30
F	3.70	3.80	3.90
G		2.54	
H	9.50	10.00	10.50
J	0.37	0.38	0.40
K	13.00	13.50	14.00
L	0.75	0.80	0.85
N		5.08	
P			
Q	2.65	2.75	2.85
R	2.60	2.70	2.80
S	1.20	1.25	1.30
Z	15.80	16.00	16.20