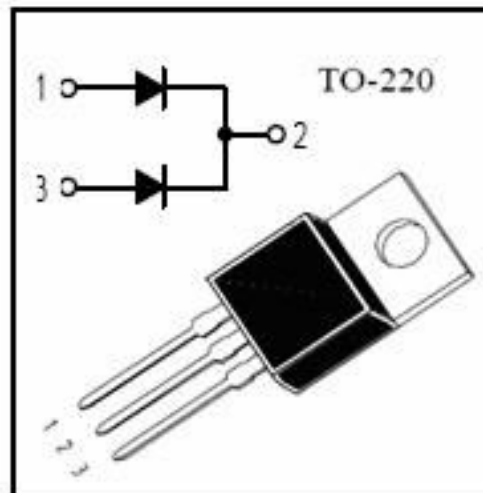


APPLICATIONS

- Switch power supply
- General circuits

FEATURES

- Common cathode structure
- Low power loss, high efficiency
- High Operating Junction Temperature. High reliability
- ROHS product



ABSOLUTE RATINGS(Tc=25°C)

| Parameter | | SYMBOL | Value | UNIT |
|--------------------------------------|------------|-------------|----------|------|
| Repetitive peak reverse voltage | | V_{RRM} | 200 | V |
| Average forward current | per device | $I_{F(AV)}$ | 12 | A |
| | per diode | | 6 | |
| Surge non repetitive forward current | | I_{FSM} | 60 | A |
| Maximum junction temperature | | T_J | 150 | °C |
| Storage temperature range | | T_{STG} | -50~+150 | °C |

Electronic Characteristics(Tc=25°C)

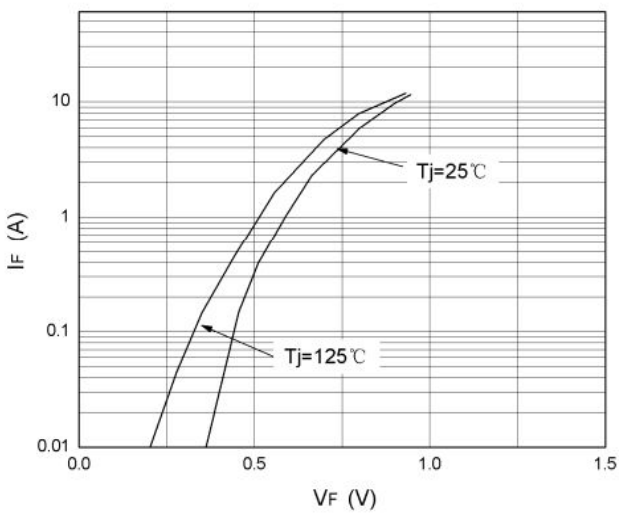
| Parameter | Tests conditions | | Value (min) | Value (typ) | Value (max) | UNIT |
|--|-------------------|---------------|-------------|-------------|-------------|---------|
| VRRM | $I_R=10\mu A$ | | 200 | | | V |
| IR | $T_J=25^\circ C$ | $V_R=V_{RRM}$ | | | 50 | μA |
| | $T_J=125^\circ C$ | | | | 200 | μA |
| VF | $T_J=25^\circ C$ | $I_F=8A$ | | 0.9 | 1.1 | V |
| | $T_J=125^\circ C$ | | | | 1.0 | V |
| Reverse Recovery Time ($I_F=0.5A, I_R=1.0, I_{rr}=0.25A$) | T_{rr} | | | 150 | | ns |

THERMAL CHARACTERISTICS

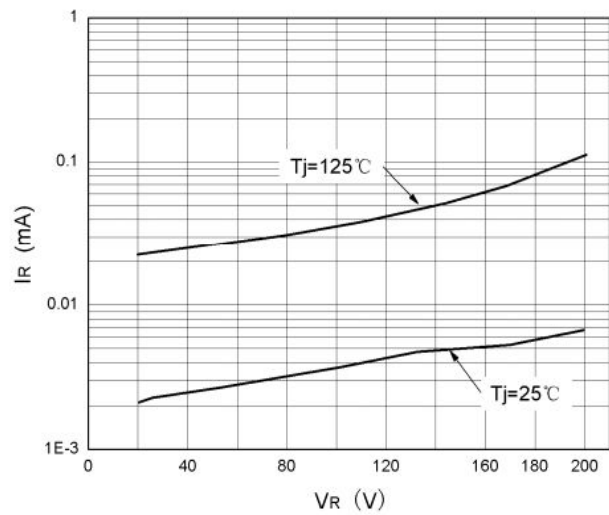
| Parameter | Symbol | Value (min) | Value (max) | Unit |
|--|----------|-------------|-------------|------|
| Thermal resistance from junction to case | Rth(j-c) | | 2.5 | °C/W |

ELECTRICAL CHARACTERISTICS(curves)

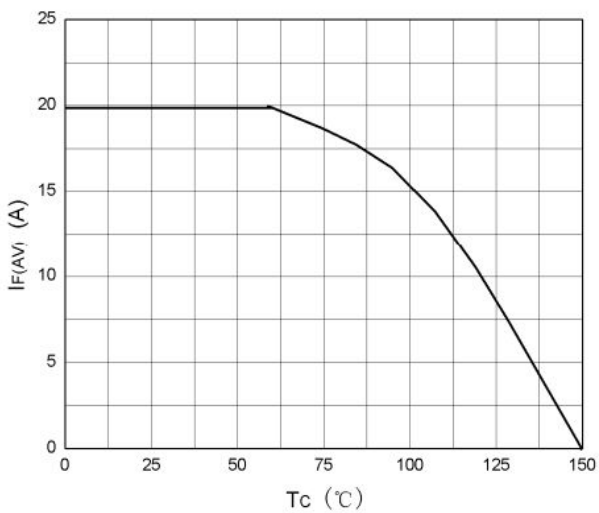
IF vs VF



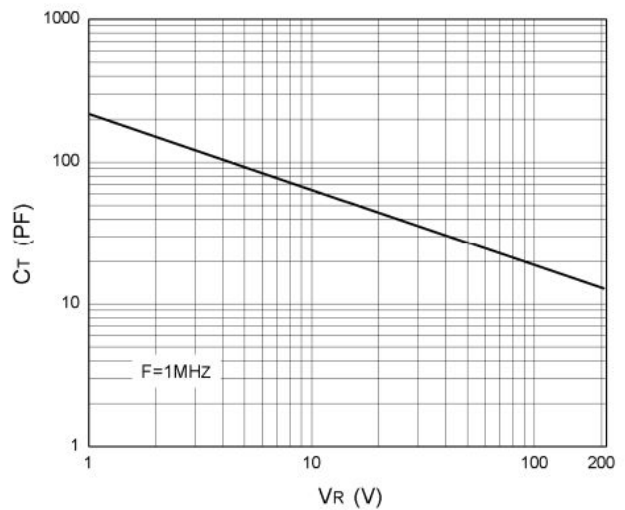
IR vs VR



IF(AV) vs Tc

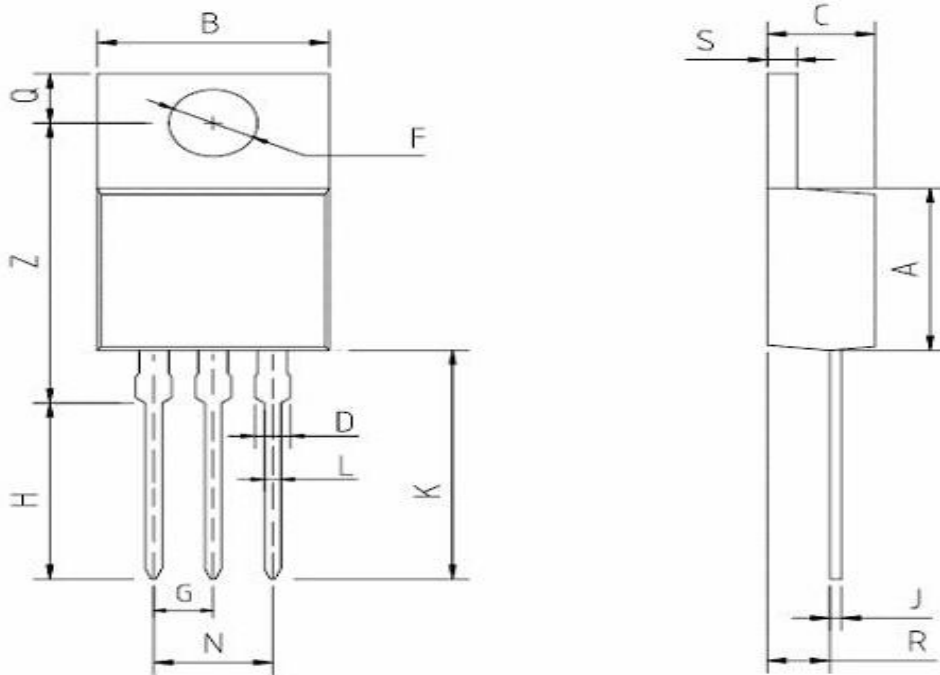


CT vs VR



TO-220 MECHANICAL DATA

UNIT: mm



| SYMBOL | Min | Nom | Max |
|--------|-------|-------|-------|
| A | 9.00 | 9.20 | 9.40 |
| B | 9.50 | 10.00 | 10.50 |
| C | 4.20 | 4.50 | 4.80 |
| D | 1.20 | 1.25 | 1.30 |
| F | 3.70 | 3.80 | 3.90 |
| G | | 2.54 | |
| H | 9.50 | 10.00 | 10.50 |
| J | 0.37 | 0.38 | 0.40 |
| K | 13.00 | 13.50 | 14.00 |
| L | 0.75 | 0.80 | 0.85 |
| N | | 5.08 | |
| P | | | |
| Q | 2.65 | 2.75 | 2.85 |
| R | 2.60 | 2.70 | 2.80 |
| S | 1.20 | 1.25 | 1.30 |
| Z | 15.80 | 16.00 | 16.20 |